

Mark Roster

MARK †	Description †	LAT †	LONG †
A	Yellow Inflatable Mark		
B	"NH" RG Fl (2+1) R 6s †	39°16.213'	76°34.570'
C	GR "FM" Fl (2+1) G 6s †	39°15.397'	76°34.306'
D	G "15" Fl G 4s †	39°14.784'	76°33.669'
E	R "16" QR †	39°14.943'	76°33.607'
F	R "6" QR †	39°15.255'	76°33.469'
G	G "11" Fl G 2.5s †	39°15.151'	76°32.874'
H	Y Can "B" †	39°14.969'	76°33.145'
I	G Can "11" †	39°14.395'	76°33.263'
J	R Nun "2DW" †	39°14.514'	76°32.301'
K	R "10A" Fl R 4s †	39°14.273'	76°32.898'
L	R "2" Fl R 4s †	39°15.394'	76°34.734'
N	R "8" QR †	39°13.711'	76°32.305'
O	G "1" Private †	39°14.006'	76°31.481'
R	G "7" Fl G 4s †	39°14.165'	76°32.165'
S	R "6" Fl R 4s †	39°13.330'	76°31.902'
T†	R "2" Fl R 2.5s †	39°13.366†	76°32.330†
V	R "4" Fl R 6s †	39°13.360'	76°32.863'
W	G "7" Fl G 2.5s †	39°14.814'	76°32.670'
X	G "3LE" Fl G 2.5s †	39°15.517'	76°35.545'
Z	Inflatable Mark at Committee Boat		

† Indicates revision

Magnetic Bearings Between Marks

		Enter Chart Vertically																		
		B	C	D	E	F	G	H	I	J	K	L	N	O	R	S	T	V	W	X
B																				
C	177																			
D	165	152																		
E	161	141	028																	
F	150	114	029	030																
G	140	114	070	081	114															
H	150	127	077	097	150	240														
I	162	152	152	165	181	213	200													
J	145	131	116	124	141	156	136	092												
K	158	147	142	152	167	192	176	125	254											
L	200	281	318	309	289	291	300	323	306	320										
N	156	149	147	152	161	174	164	144	192	152	143									
O	144	134	126	131	140	148	138	117	140	115	130	076	118	118	118	037	057	070	143	127
R	149	138	129	136	148	162	148	116	175	112	133	025				357	020	045	160	129
S	156	149	148	152	159	169	161	147	177	152	144	152	177	177			107	104	169	139
T	160	154	155	159	166	178	170	156	192	165	149	194	200	200	287			100	181	142
V	166	162	168	171	177	191	184	175	212	190	156	242	225	225	284	280			197	147
W	145	126	099	111	137	166	124	059	328	029	121	357	340	340	349	001	017			119
X	239	288	308	302	291	291	298	314	303	313	292	317	309	309	319	322	327	299		

Distances Between Marks (nm)

		C	D	E	F	G	H	I	J	K	L	N	O	R	S	T	V	W	X
B	0.84	1.59	1.47	1.28	1.69	1.66	2.08	2.45	2.33	0.83	3.06	3.26	2.77	3.55	3.34	3.15	2.03	1.03	
C		0.79	0.71	0.66	1.14	1.00	1.29	1.79	1.57	0.33	2.29	2.59	2.07	2.78	2.54	2.32	1.40	0.97	
D			0.17	0.50	0.72	0.45	0.50	1.09	0.79	1.03	1.51	1.87	1.32	2.00	1.76	1.56	0.78	1.63	
E				0.33	0.60	0.36	0.61	1.10	0.87	0.98	1.59	1.90	1.36	2.09	1.86	1.69	0.74	1.61	
F					0.47	0.38	0.88	1.17	1.08	0.99	1.79	1.98	1.49	2.28	2.09	1.95	0.76	1.63	
G						0.28	0.81	0.78	0.88	1.46	1.51	1.57	1.13	1.97	1.84	1.79	0.37	2.10	
H							0.58	0.80	0.72	1.30	1.42	1.61	1.11	1.90	1.72	1.62	0.40	1.94	
I								0.76	0.31	1.52	1.01	1.43	0.88	1.50	1.26	1.08	0.62	2.09	
J									0.52	2.08	0.80	0.81	0.36	1.22	1.15	1.23	0.41	2.71	
K											1.81	0.73	1.13	0.58	1.22	1.01	0.91	0.57	2.40
L												2.53	2.88	2.34	3.01	2.75	2.50	1.70	0.64
N													0.70	0.47	0.49	0.35	0.56	1.14	3.09
O														0.55	0.75	0.92	1.25	1.23	3.49
R															0.86	0.81	0.97	0.76	2.95
S																0.33	0.75	1.60	3.57
T																	0.41	1.47	3.29
V																		1.46	3.00
W																			2.34

Baltimore City Yacht Association

# Race Marks



## 2024

Positions from  
USCG Light List Volume II Atlantic Coast 2024  
LNM District 5 Week 15/24

Last updated: April 15, 2024  
Computed by: Scott Kirwin

SO. LOCUST PT.

LAZARETTO PT.

SEAGIRT

DUNDALK

FAIRFIELD

SOLLERS PT.

CURTIS BAY

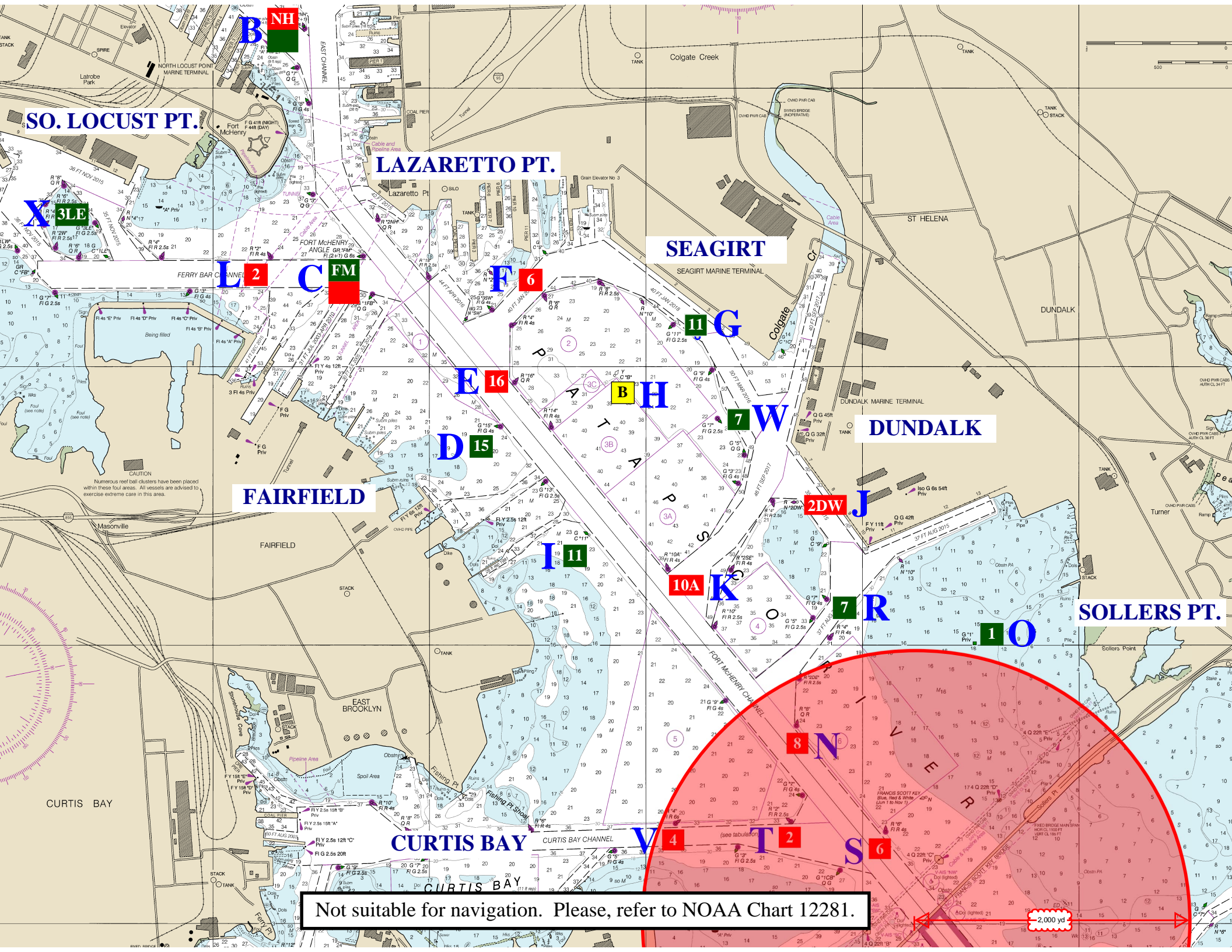
V 4

T 2

S 6

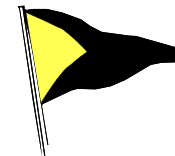
Not suitable for navigation. Please, refer to NOAA Chart 12281.

2,000 yd



# Baltimore City Yacht Association

# RACE MARKS 2024



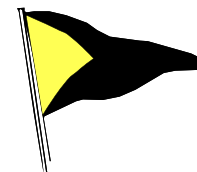
## Mark Roster

MARK †	Description †	LAT †	LONG †
A	Yellow Inflatable Mark		
B	"NH" RG Fl (2+1) R 6s	39°16.213'	76°34.570'
C	GR "FM" Fl (2+1) G 6s	39°15.397'	76°34.306'
D	G "15" Fl G 4s	39°14.784'	76°33.669'
E	R "16" QR	39°14.943'	76°33.607'
F	R "6" QR	39°15.255'	76°33.469'
G	G "11" Fl G 2.5s	39°15.151'	76°32.874'
H	Y Can "B"	39°14.969'	76°33.145'
I	G Can "11"	39°14.395'	76°33.263'
J	R Nun "2DW"	39°14.514'	76°32.301'
K	R "10A" Fl R 4s	39°14.273'	76°32.898'
L	R "2" Fl R 4s	39°15.394'	76°34.734'
N	R "8" QR	39°13.711'	76°32.305'
O	G "1" Private	39°14.006'	76°31.481'
R	G "7" Fl G 4s	39°14.165'	76°32.165'
S	R "6" Fl R 4s	39°13.330'	76°31.902'
T†	R "2" Fl R 2.5s	39°13.366'†	76°32.330'†
V	R "4" Fl R 6s	39°13.360'	76°32.863'
W	G "7" Fl G 2.5s	39°14.814'	76°32.670'
X	G "3LE" Fl G 2.5s	39°15.517'	76°35.545'
Z	Inflatable Mark at Committee Boat		

† Indicates revision

# Baltimore City Yacht Association

## RACE MARKS 2024



### Magnetic Bearings Between Marks

Enter Chart Vertically

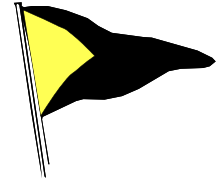
	↓ B	↓ C	↓ D	↓ E	↓ F	↓ G	↓ H	↓ I	↓ J	↓ K	↓ L	↓ N	↓ O	↓ R	↓ S	↓ T	↓ V	↓ W	↓ X	
B		357	345	341	330	320	330	342	325	338	020	336	324	329	336	340	346	325	059	B
C	177		332	321	294	294	307	332	311	327	101	329	314	318	329	334	343	306	108	C
D	165	152		208	209	250	257	332	296	322	138	327	306	309	328	335	348	279	128	D
E	161	141	028		210	261	277	345	304	332	129	332	311	316	332	339	351	291	122	E
F	150	114	029	030		294	330	001	321	347	109	341	320	328	339	346	357	317	110	F
G	140	114	070	081	114		060	033	336	012	111	354	328	342	349	358	011	346	111	G
H	150	127	077	097	150	240		020	316	356	120	344	318	328	341	350	004	304	118	H
I	162	152	152	165	181	213	200		272	305	142	324	297	296	327	336	355	239	134	I
J	145	131	116	124	141	156	136	092		074	126	012	320	355	357	012	032	148	123	J
K	158	147	142	152	167	192	176	125	254		139	332	295	292	332	345	010	209	132	K
L	200	281	318	309	289	291	300	323	306	320		323	310	313	325	329	336	301	112	L
N	156	149	147	152	161	174	164	144	192	152	143		256	205	332	014	062	177	137	N
O	144	134	126	131	140	148	138	117	140	115	130	076		118	037	057	070	143	127	O
R	149	138	129	136	148	162	148	116	175	112	133	025	298		357	020	045	160	129	R
S	156	149	148	152	159	169	161	147	177	152	144	152	217	177		107	104	169	139	S
T	160	154	155	159	166	178	170	156	192	165	149	194	237	200	287		100	181	142	T
V	166	162	168	171	177	191	184	175	212	190	156	242	250	225	284	280		197	147	V
W	145	126	099	111	137	166	124	059	328	029	121	357	323	340	349	001	017		119	W
X	239	288	308	302	291	291	298	314	303	313	292	317	307	309	319	322	327	299		X

Computed by: Scott Kirwin

Last updated: April 15, 2024

# Baltimore City Yacht Association

## RACE MARKS 2024



Distances Between Marks (nm)

	C	D	E	F	G	H	I	J	K	L	N	O	R	S	T	V	W	X	
B	0.84	1.59	1.47	1.28	1.69	1.66	2.08	2.45	2.33	0.83	3.06	3.26	2.77	3.55	3.34	3.15	2.03	1.03	B
C		0.79	0.71	0.66	1.14	1.00	1.29	1.79	1.57	0.33	2.29	2.59	2.07	2.78	2.54	2.32	1.40	0.97	C
D			0.17	0.50	0.72	0.45	0.50	1.09	0.79	1.03	1.51	1.87	1.32	2.00	1.76	1.56	0.78	1.63	D
E				0.33	0.60	0.36	0.61	1.10	0.87	0.98	1.59	1.90	1.36	2.09	1.86	1.69	0.74	1.61	E
F					0.47	0.38	0.88	1.17	1.08	0.99	1.79	1.98	1.49	2.28	2.09	1.95	0.76	1.63	F
G						0.28	0.81	0.78	0.88	1.46	1.51	1.57	1.13	1.97	1.84	1.79	0.37	2.10	G
H							0.58	0.80	0.72	1.30	1.42	1.61	1.11	1.90	1.72	1.62	0.40	1.94	H
I								0.76	0.31	1.52	1.01	1.43	0.88	1.50	1.26	1.08	0.62	2.09	I
J									0.52	2.08	0.80	0.81	0.36	1.22	1.15	1.23	0.41	2.71	J
K										1.81	0.73	1.13	0.58	1.22	1.01	0.91	0.57	2.40	K
L											2.53	2.88	2.34	3.01	2.75	2.50	1.70	0.64	L
N												0.70	0.47	0.49	0.35	0.56	1.14	3.09	N
O													0.55	0.75	0.92	1.25	1.23	3.49	O
R														0.86	0.81	0.97	0.76	2.95	R
S															0.33	0.75	1.60	3.57	S
T																0.41	1.47	3.29	T
V																	1.46	3.00	V
W																		2.34	W
	C	D	E	F	G	H	I	J	K	L	N	O	R	S	T	V	W	X	

Computed by: Scott Kirwin

Last updated: April 15, 2024