

BCYA

Racing Marks

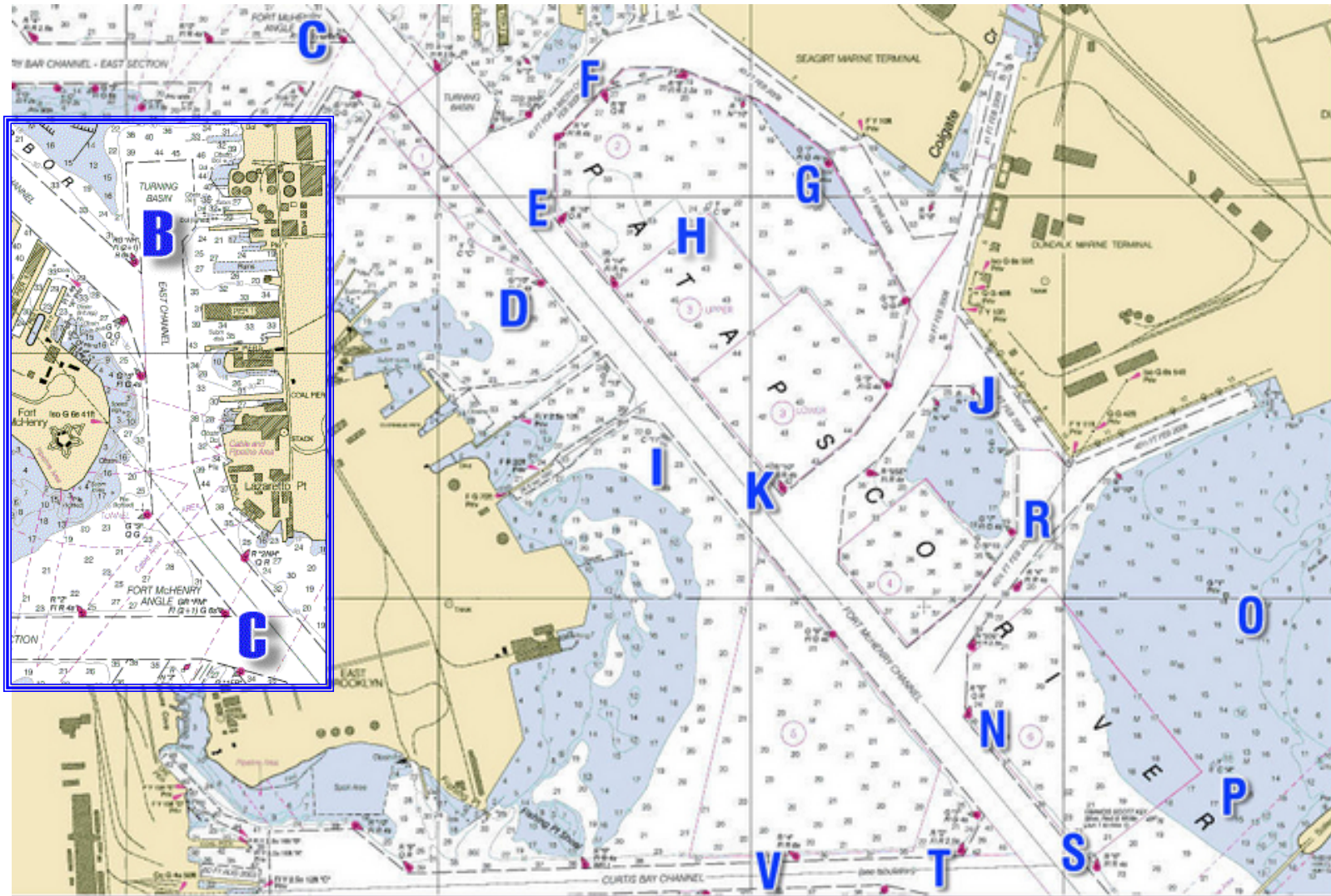
MARK ROSTER (● = coordinates revised 2010)			
MARK	DESCRIPTION	LAT	LONG
A	YELLOW INFLATABLE SOUTH OF BAY CAFÉ		
B	"NH" RG FLASH (2+1) R 6s	39° 16.213'	76° 34.575'
C	GR "FM" FLASH (2+1) G 6s	39° 15.390'	76° 34.304'
D	G "15" FLASH G 4s	39° 14.785'	76° 33.671'
E	R "16" QR	39° 14.942'	76° 33.605'
F	R "6" QR	39° 15.254'	76° 33.469'
G	G "7" FLASH G 4s (●)	39° 15.082'	76° 32.752'
H	Y CAN "B"	39° 14.969'	76° 33.145'
I	G CAN "11"	39° 14.395'	76° 33.260'
J	R NUN "2DW"	39° 14.527'	76° 32.290'
K	R "10" FLASH R 4s(●)	39° 14.272'	76° 32.896'
N	R "8" QR(●)	39° 13.709'	76° 32.304'
O	G "1" Priv(●)	39° 14.007'	76° 31.476'
P	Y CAN "A"	39° 13.575'	76° 31.528'
R	G "7" FLASH G 4s(●)	39° 14.164'	76° 32.164'
S	R "6" FLASH R 4s	39° 13.328'	76° 31.893'
T	R "2" FLASH R 2.5s	39° 13.370'	76° 32.327'
V	R "4" FLASH R 6s	39° 13.357'	76° 32.856'
Z	INFLATABLE MARK AT COMMITTEE BOAT		

DISTANCES BETWEEN MARKS (nm)

	C	D	E	F	G	H	I	J	K	N	O	P	R	S	T	V	
B	0.85	1.59	1.48	1.29	1.81	1.67	2.08	2.44	2.34	3.06	3.26	3.54	2.77	3.55	3.33	3.15	B
C		0.78	0.70	0.66	1.24	0.99	1.28	1.78	1.56	2.29	2.59	2.81	2.06	2.78	2.53	2.32	C
D			0.17	0.49	0.77	0.45	0.50	1.10	0.79	1.51	1.87	2.05	1.32	2.00	1.76	1.56	D
E				0.33	0.68	0.36	0.61	1.10	0.87	1.59	1.90	2.11	1.36	2.09	1.86	1.69	E
F					0.58	0.38	0.87	1.17	1.08	1.79	1.98	2.25	1.49	2.28	2.08	1.96	F
G						0.32	0.79	0.66	0.82	1.42	1.46	1.78	1.02	1.88	1.74	1.73	G
H							0.58	0.80	0.72	1.42	1.61	1.87	1.11	1.91	1.72	1.63	H
I								0.76	0.31	1.01	1.44	1.57	0.88	1.50	1.25	1.08	I
J									0.53	0.82	0.82	1.12	0.38	1.24	1.16	1.25	J
K										0.73	1.13	1.27	0.58	1.22	1.00	0.92	K
N											0.71	0.62	0.47	0.50	0.34	0.55	N
O												0.43	0.56	0.75	0.92	1.25	O
P													0.77	0.38	0.65	1.05	P
R														0.86	0.80	0.97	R
S															0.34	0.75	S
T																0.41	T
	C	D	E	F	G	H	I	J	K	N	O	P	R	S	T	V	

**MAGNETIC BEARINGS BETWEEN MARKS
ENTER VERTICALLY**

	B	C	D	E	F	G	H	I	J	K	N	O	P	R	S	T	V	
B		357	345	341	329	320	329	342	325	337	336	324	329	329	335	340	346	B
C	177		332	321	293	295	306	332	310	327	328	313	321	318	329	334	342	C
D	165	152		209	210	258	257	332	295	322	327	306	317	309	328	335	347	D
E	161	141	29		210	269	277	345	303	332	332	311	321	316	332	339	351	E
F	149	113	30	30		298	330	0	320	347	341	320	329	328	339	346	357	F
G	140	115	78	89	118		81	41	338	19	357	329	339	345	350	0	14	G
H	149	126	77	97	150	261		20	315	356	344	318	329	328	341	349	3	H
I	162	152	152	165	180	221	200		271	305	324	297	313	296	326	336	354	I
J	145	130	115	123	140	158	135	91		73	12	321	339	356	357	13	32	J
K	157	147	142	152	167	199	176	125	253		332	295	314	292	332	345	9	K
N	156	148	147	152	161	177	164	144	192	152		256	294	205	331	14	62	N
O	144	133	126	131	140	148	138	117	141	115	76		16	118	37	57	70	O
P	149	141	137	141	149	159	149	133	159	134	114	196		151	60	83	89	P
R	149	138	129	136	148	165	148	116	176	112	25	298	331		357	20	45	R
S	155	149	148	152	159	170	161	146	177	152	151	217	240	177		108	103	S
T	160	154	155	159	166	180	169	156	193	165	194	237	263	200	288		99	T
V	166	162	167	171	177	194	183	174	212	189	242	250	269	225	283	279		V
	B	C	D	E	F	G	H	I	J	K	N	O	P	R	S	T	V	



NOAA Chart 12281 Corrected to Aug. 2008